



# INNOV8 EQUIPMENT





## TMAUS-100 TRUCK MOUNTED ATTENUATOR

- The Innov8 Equipment Truck Mounted Attenuator (TMAUS-100) and is used daily around the world to protect vulnerable road workers from errant vehicles.
- The TMA-US(100K) TL-3 crash cushion is manufactured completely out of aluminium and the support structure is manufactured from galvanized steel and operated via a hydraulic power pack.
- The TMAUS-100 has been fully tested to NCHRP350 (3-50 | 3-51 | 3-52 |3-53) and the optional UK 110K test.
- Only to be used on roads under 100km/h, ideal for use by Local Councils, Civil Infrastructure and Road Maintenance Workers.
- The unique design of the TMAUS-100 makes it possible to use it daily on all roads.
- INNOV8 Equipment supplies a full turn key package item from the host vehicle with standard safety accessories and fittings, and a comprehensive list of customisable accessories to suit the needs and budget of your next TMA purchase.

### Standard Items Fitted

- ✓ Emergency Lighting that complies with NHVR VSG-12
- ✓ 2 x 4 point safety harness (Driver and Passenger)
- ✓ DVR with 7 x Cameras for 360 degree recording
- ✓ Emergency siren and Impact siren
- ✓ Early Warning Package Visual & Audio
- ✓ Full Colour C Size VMS
- ✓ C Size 15 Lamp Arrow Board
- ✓ Dr Air Brakes (Automatic Impact Brakes)
- ✓ Central Control Box
- ✓ 2 x UHF Radios



e-mail: [sales@innov8equipment.com.au](mailto:sales@innov8equipment.com.au)

ph: 1300 071 010



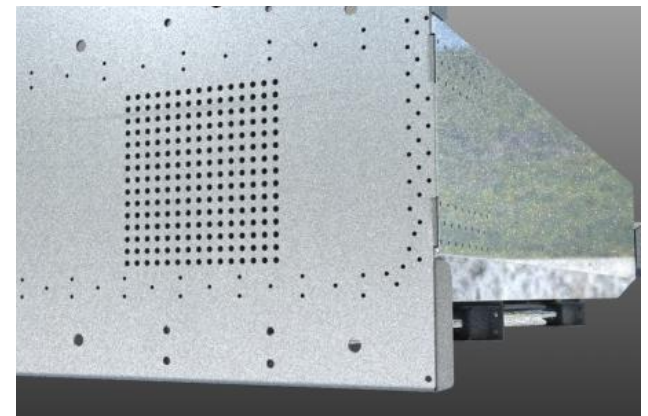
The INNOV8 Equipment TMAUS-100 is a crash absorber consisting of a hydraulic lifting frame with a 100K crash cushion tested in accordance with NCHRP-350 TLIII (3-50 | 3-51 | 3-52 | 3-53).

Technical data:

- ✓ Tested according the NCHRP-350 TL III (3-50 | 3-51 | 3-52 | 3-53). 2000P tests were done with a 2000kg US pick-up truck.
- ✓ Tested according the UK optional 110K test.
- ✓ Standard 100K crash cushion, completely Aluminum excluding the galvanized backplate.
- ✓ Two compartments for some back-up or buffer batteries.
- ✓ Operation from within the truck via push button controller and a 10 pole connector.
- ✓ The entire machine can also be operated from the optional control unit on the machine.
- ✓ At the TMA a plug (175A) is mounted, to power the entire machine from the vehicle.
- ✓ Whole machine is 24 Volt powered.
- ✓ Complete hydraulic unit and electronics are mounted in a closed compartment.
- ✓ Two hydraulic cylinders to upper and lower the TMAUS-100 crash cushion
- ✓ Galvanized steel structure.
- ✓ The crash cushion can is be painted in White for high visibility.
- ✓ Including test certifications and CE mark
- ✓ Rear (driving) lights on support structure and crash cushion

Some advantages of the INNOV8 LTMA:

- ✓ No moisture problems because of the ALU cushion and galvanized structure
- ✓ Great design with aluminum per-bent tubes on top and bottom of the cushion
- ✓ Vibration tested
- ✓ Easy replaceable hood (Bolted connection)
- ✓ Easy to use
- ✓ European quality
- ✓ Spare parts always delivered from stock





**The TMAUS-100 consists of the following basic components:**

- ✓ An aluminum folded box with 4 aluminum Cartridges, and galvanized steel support structure.
- ✓ LED Tail Lights
- ✓ Rear plate – Red & White Chevron 150mm Wide Red Reflective Sheeting on a White Non-Reflective background.
- ✓ Underside of TMA: “CAUTION KEEP CLEAR” – “THIS UNIT MAY LOWER AT ANYTIME”
- ✓ TL-3 rating displayed on both side panels of TMA.
- ✓ Self Adjusting Reverse Alarm – Squawker/ Quaker (2)

**Flat Tray to Truck**

- ✓ 20mm steel plate floor painted anti slip black
- ✓ Heavy duty RHS steel headboard approx. protection panel on rear – painted black to contrast/highlight the arrow sign when viewed from the rear.
- ✓ Three-Point Contact System on LHS & RHS
- ✓ LED side marker lights each side of tray
- ✓ LED indicator each side at rear
- ✓ Lockable Tool Box (1) under tray
- ✓ Two (2) LED Work Lights Flood Beam mounted to headboard.
- ✓ Mudflaps, reflectors and rear marker plates to suit registration requirements